



INTERNAL HEX^(ps)

PLATFORM SHIFT

PRESERVATION
OF BONE NEVER
LOOKED BETTER



infinity
Dental Implant Systems



infinite opportunities in implantology

For almost 50 years ACE Surgical has been dedicated to dental surgical advancements. We continue to develop and manufacture the highest quality, state-of-the-art products at competitive prices; while keeping customer service at the core of our business.

infinity dental implant systems allow you to place and restore our implants with confidence and without the added expense.

The infinity INTERNAL HEX Dental Implant System is committed to delivering a functional and esthetic dental implant solution to both you and your patients.

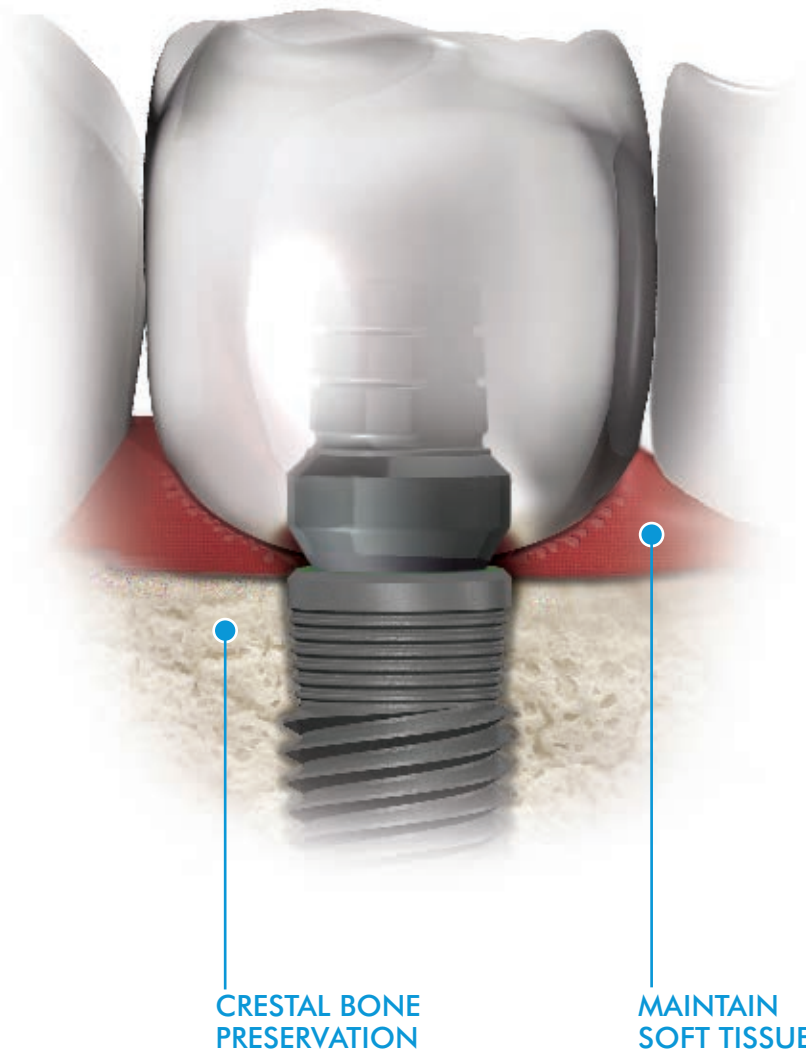
infinity Implants—endless innovation, infinite opportunities in implantology.

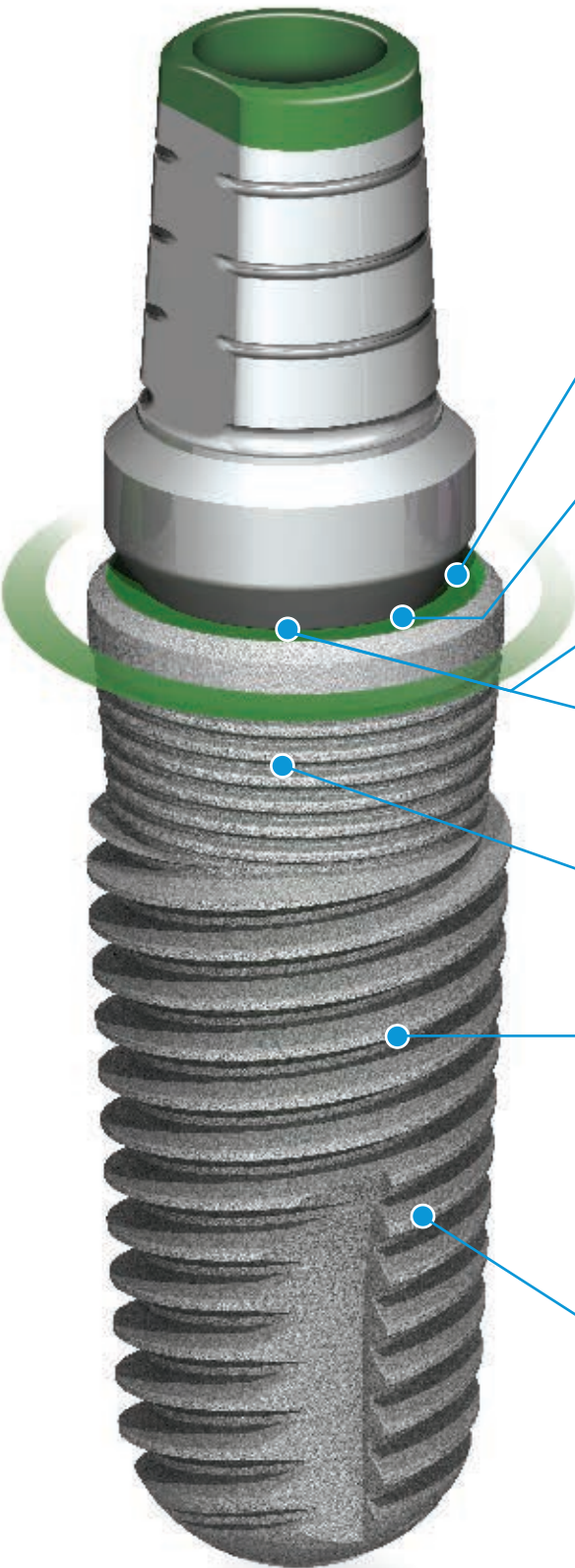


INTERNAL HEX^(ps) PLATFORM SHIFT

Preservation of Bone Never Looked Better

Patients want implants to replace teeth both functionally and cosmetically. The infinity INTERNAL HEX^(ps), achieves both these demands. This implant design brings new opportunities for esthetic outcomes. The INTERNAL HEX^(ps) implants create more room for the biologic width by expanding the restorative platform. This “platform shift” aids in achieving increased bone maintenance and soft tissue around the implant-abutment pillar resulting in outcomes that never looked better.





PLATFORM SHIFT

INTERNAL HEX^(ps) implants have been developed to create more platform room for the biologic width. This will aid in crestal bone height and soft tissue maintenance.

COLOR-CODED

The entire INTERNAL HEX^(ps) system is color-coded to easily identify the implant platform connection and their corresponding prosthetics, making it easier for you and your referrals to match between the restorative and implant components.

PLACEMENT OF THE INTERNAL HEX^(ps) IMPLANT

Use your existing implant tools to drive the INTERNAL HEX^(ps) implant or utilize the precision engineered driver that comes standard with the surgical kit. The drivers are available in both a contra-angle or ratchet configuration.

SECURITY WITH THE INTERNAL HEX^(ps) CONNECTION

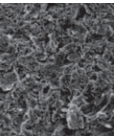
With the internal INTERNAL HEX^(ps) design you get peace of mind. Three locking tri-channel points make the prosthetic attachment to the implant a secure and precise fit each time.

MICRO-GROOVES

Placed at the neck of all INTERNAL HEX^(ps) implants are micro-grooves that have been designed to aid in maintaining crestal bone.

RBM TEXTURED SURFACE

Resorbable Blast Media technology has been proven for over twenty years. RBM surface treatment is designed to roughen the surface of an implant without leaving the residual embedded blast particles. This microtextured surface is created by grit-blasting machined titanium with hydroxylapatite (HA) and tri-calcium phosphate (TCP) particles, followed by washing in non-etching acid and distilled water baths to remove any debris. The result is a moderately roughened surface which provides greater osseointegration.



TRIPLE LEAD THREAD

For faster implant insertion.

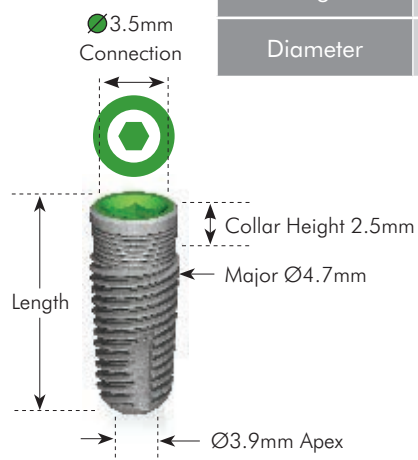
THE INTERNAL HEX OFFERING

Please inquire about the complete infinity INTERNAL HEX Implant offering.



INTERNAL HEX^(ps) Ø4.7mm - Platform Shift Implants Tapered

PS Product No.	214708	214710	214711	214713	20585001
Connection	Ø3.5mm	Ø3.5mm	Ø3.5mm	Ø3.5mm	IMPLANT COVER SCREW Included with every Implant
Length	8mm	10mm	11.5mm	13mm	
Diameter	Ø4.7mm	Ø4.7mm	Ø4.7mm	Ø4.7mm	



Caution: The size of the implants are 0.6mm longer in length than what is described.
Note: Follow drilling protocol for a Ø4.7mm implant. Drive the implant with a Ø3.5mm Implant Driver.

INTERNAL HEX^(ps)

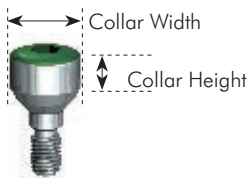
PLATFORM SHIFT



Ø4.7mm
Implant

HEALING CAPS

- Uses a 1.25mm Hex Driver
- 30° Emergence Profile for Contoured Healing Caps
- Recommended Seating Torque is 15 N-cm



Product No.	20135373	20135375
Connection	Ø3.5mm	Ø3.5mm
Collar Width	3.7mm	3.7mm
Collar Height	3mm Straight	5mm Straight



Product No.	20135453	20135455	20135553	20135555
Connection	Ø3.5mm	Ø3.5mm	Ø3.5mm	Ø3.5mm
Collar Width	4.5mm	4.5mm	5.5mm	5.5mm
Collar Height	3mm Contoured	5mm Contoured	3mm Contoured	5mm Contoured



Ø4.7mm
Implant

IMPRESSION COMPONENTS

Closed and Open Tray Impression Copings w/Retaining Screw

- Implant Level Impression Coping
- Includes Retaining Screw
- Uses a 1.25mm Hex Driver
- Recommended Seating Finger Pressure



Product No.	2063545	2053545
Connection	Ø3.5mm	Ø3.5mm
Collar Width	4.5mm	4.5mm
Tray Type	Closed Tray	Open Tray



Implant Analog

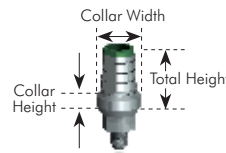
Product No.	20735
Connection	Ø3.5mm



4.7mm
Implant

PREPABLE ABUTMENTS

- Includes Retaining Screw
- Uses a 1.25mm Hex Driver
- Recommended Seating Torque 30 N-cm
- 1mm Prepable Score Lines



Product No.	20235452	20235454
Connection	Ø3.5mm	Ø3.5mm
Collar Width	4.5mm	4.5mm
Collar Height	2mm	4mm
Total Height	7mm	9mm



4.7mm
Implant

UCLA ABUTMENTS

- Includes Retaining Screw
- Uses a 1.25mm Hex Driver
- Recommended Seating Torque 30 N-cm



Product No.	2093545	2083545
Connection	Ø3.5mm	Ø3.5mm
Collar Width	4.5mm	4.5mm
Engagement	Non-Engaged	Engaged



ACE SURGICAL SUPPLY CO., INC.

1034 Pearl Street, Brockton, MA 02301 - USA

1-800-441-3100 • www.acesurgical.com