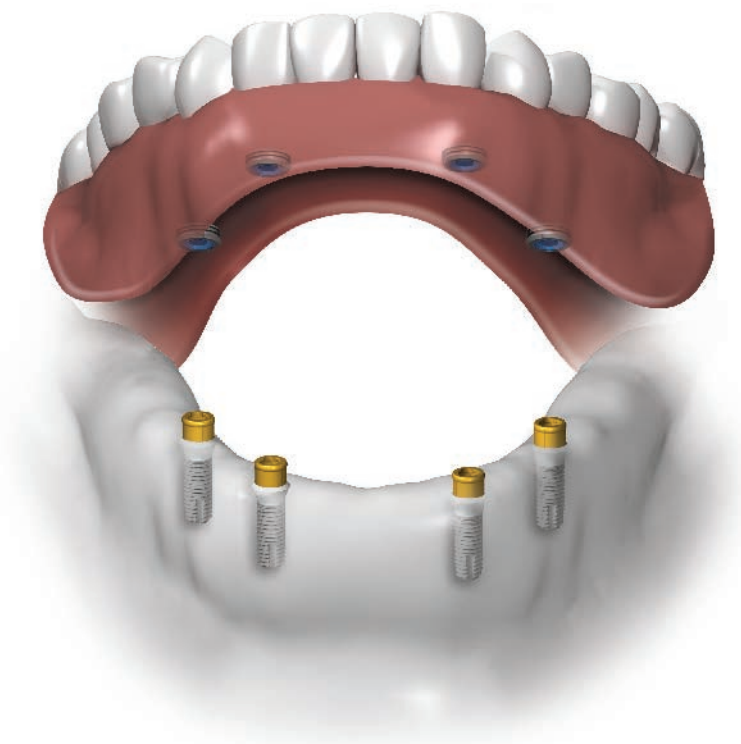


# ONE-PIECE. ONE SOLUTION.

DELIVER THE SECURITY YOUR DENTURE WEARING  
PATIENTS DESIRE, WITH ONE SIMPLE SOLUTION.



implantone

## ONE-PIECE. ONE SOLUTION.

Now it's possible for you to offer reliable, predictable one-piece implants to your patients who are denture wearers. The implantONE Dental Implant System is an affordable option for denture wearers. Precision engineered by ACE Surgical Supply, it features the renowned LOCATOR® Attachment by Zest Anchors, LLC.

The implantONE System offers you a reliable overdenture solution with the confidence of a 3.25mm diameter implant. With implantONE, you can restore dental function for your patients at a price that will add to your patients smile.

ACE Surgical has been leading the way in offering technical advances to the dental specialty market for almost 50 years. Our mission is to provide our customers with high-quality products, reliable service, and a commitment to customer support.

To learn more about the implantONE solution, visit our website [www.acesurgical.com](http://www.acesurgical.com) or call to speak with one of our implant specialists by dialing 800-441-3100.

# implantONE



"I finally have the comfort and security I've always wished for."



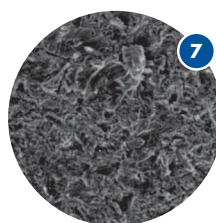
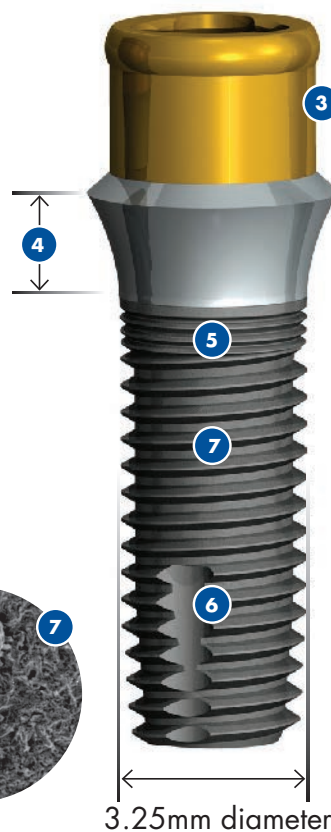
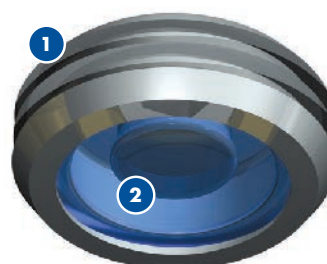
## Deliver the Security Your Denture Wearing Patients Desire, With One Simple Solution.

Now you can provide reliable, predictable, dental implants to your patients who are denture wearers. Precision engineered by ACE Surgical, implantONE implants feature the LOCATOR® Attachment in a single, all-in-one, solution.

- An affordable solution for denture wearers.
- Available in five implant lengths with an assortment of collar heights to accommodate a range of gingival tissue depths.

### implantONE Features:

- 1 ZEST LOCATOR® Denture Cap – The industry standard for overdenture attachment.
- 2 ZEST LOCATOR® Retention Male – dual or single surface Retention Rings for all angles of insertion and desired retention.
- 3 The unique LOCATOR® Abutment to Denture Cap attachment is designed to last the lifetime of the denture.
- 4 implantONE implants are available in multiple LOCATOR® abutment and tissue cuff heights.
- 5 Micro-Grooves at the implant neck for maintaining crestal bone.
- 6 Sharp cutting futes for easy implant insertion.
- 7 Resorbable Blast Media (RBM) Surface Texturing provides improved osseointegration.

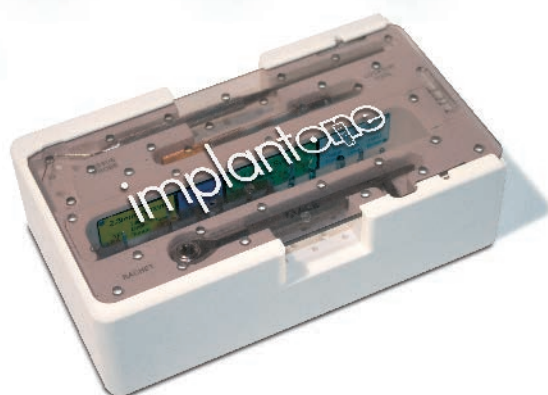






## implantONE Implant Offerings

implantONE with LOCATOR® Attachment			
Diameter	Ø 3.25mm	Ø 3.25mm	Ø 3.25mm
Cuff Height	.5mm	2mm	4mm
If tissue depth is:	.5-1.5mm	2-3mm	4-5mm
8.0mm L	11320805	11320820	11320840
10.0mm L	11321005	11321020	11321040
11.5mm L	11321105	11321120	11321140
13.0mm L	11321305	11321320	11321340
15.0mm L	11321505	11321520	11321540



## implantONE Dental Implant System Surgical Kit

### Complete Kit

11-99-1000      implantONE Dental Implant System Kit

### Kit Contents

63-011-06	Stainless Steel Tissue Probe, 1-12mm Markings
206-8393	Zest LOCATOR® Male Install/Remove Tool
88-330009	3.25mm Implant Starter Bur (1.6-2.35mm)
20-9780-01	Parallel Pin/Depth Gauge
04-9881-01	3.25mm Implant Twist Drill (2.8mm)
04-9561-01	3.25mm Implant Bone Tap
11-9741-11	implantONE Contra Angle Driver
11-1519-11	implantONE Hand Driver (shown on Torque Wrench)
003-5245	Implant Torque Ratchet
454-5211	Autoclavable Set Up Tray (insert shown removed)

### Removable Insert

easily separates from the Set-Up Tray for convenience, and takes up less space on your surgical tray.





## ZEST LOCATOR® Components

### Replacement Male - Sets

Each Set includes:

- (1) Denture Cap with Black Processing Male
- (1) White Block-Out Spacer
- (3) Nylon Retention Males: 1 each of the Dual or Extended Range Nylon Retention Males

#### Dual Retention Replacement Male

Two retention surfaces, the outer ring and the center nipple allows for maximum hold. Good for use with divergent implants up to 10° (accommodates up to 20° between 2 or more implants).

<b>A</b>	206-85192	Dual Retention	2 sets / pkg
	206-851910	Dual Retention	10 sets / pkg

#### Extended Range Replacement Male

Single retention surface using only the outer ring with the inner nipple removed. Good for use with divergent implants up to 20° (accommodates up to 40° between 2 or more implants).

<b>B</b>	206-85402	Angle Retention	2 sets / pkg
	206-854010	Angle Retention	10 sets / pkg

#### Male Processing Packs

- Available in various retention strengths.
- Sold in packages of 4.

<b>C</b>	See Chart	Male Processing Packs	4 / Pack
----------	-----------	-----------------------	----------



Use the ZEST LOCATOR® Insert/Removal Tool, to easily change the Replacement Males (206-8393)

<b>C</b>	Color	Item #	Retention	lbs.	Grams
<b>Male Processing Pack (Dual Retention) - 4 per pack</b>					
	Clear	206-8524	Standard	5 lbs.	2268
	Pink	206-8527	Light	3 lbs.	1361
	Blue	206-8529	Extra Light	1.5 lbs.	680
<b>Male Processing Pack (Extended Range) - 4 per pack</b>					
	Green	206-8547	Standard	3-4 lbs.	1361-1814
	Orange	206-8915	Light	2 lbs.	907
	Red	206-8548	Extra Light	.5-1.5 lbs.	226-680

## Lab Components

<b>D</b>	206-8514	White Block-Out Spacer	20/pkg
Note: These Spacers are frequently used items and should be kept on-hand. You may use 1-3 for each implant being placed.			
<b>E</b>	206-8505	Transfer	4/pkg
<b>F</b>	206-8516	Analogue	4/pkg



## ZEST CHAIRSIDE™

### Denture Prep & Polish Kit

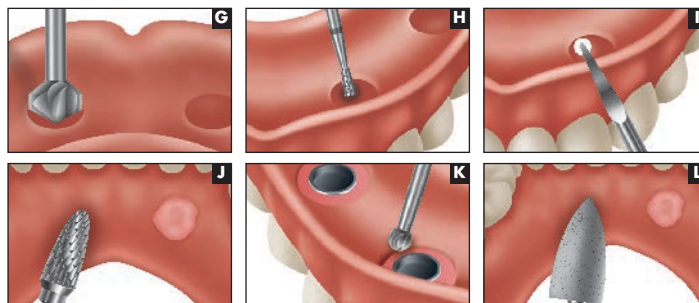
- A comprehensive kit consisting of Recess, Trim, Undercut, Grind and Vent Burs, as well as a Polisher, all of which are designed to address the most frequent overdenture preparation requirements.
- A unique to the market CHAIRSIDE™ Recess Bur, specifically designed by ZEST Anchors, that quickly and easily prepares the exact size recess for the LOCATOR® and SATURNO™ Denture Attachment Housings (Denture Caps)

#### Complete Kit:

206-09582 CHAIRSIDE™ Denture Prep & Polish Kit

#### Kit Contents:

<b>G</b>	Recess Bur	Creates the precise space in denture for the proper luting of ZEST LOCATOR® Denture Caps.
<b>H</b>	Undercut Bur	Creates an undercut in the recess, enhances the mechanical retention of the Denture Caps.
<b>I</b>	Vent Hole Bur	Vent hole through lingual wall of the denture enables excess Attachment Acrylic to flow from the prosthesis.
<b>J</b>	Trim Bur	After attachments has cured, Trim Bur removes excess Acrylic, modifies the prosthesis as needed.
<b>K</b>	Grind Bur	Removes excess Attachment Acrylic from around the Denture Attachment Housings, if needed.
<b>L</b>	Polisher	Use to finish and polish, smooths the Attachment Acrylic in and around the prosthesis.





# implantone

One-Piece. One Solution.

**ACE SURGICAL SUPPLY CO., INC.**

1034 Pearl Street, Brockton, MA 02301 - USA

1-800-441-3100 • [www.acesurgical.com](http://www.acesurgical.com)